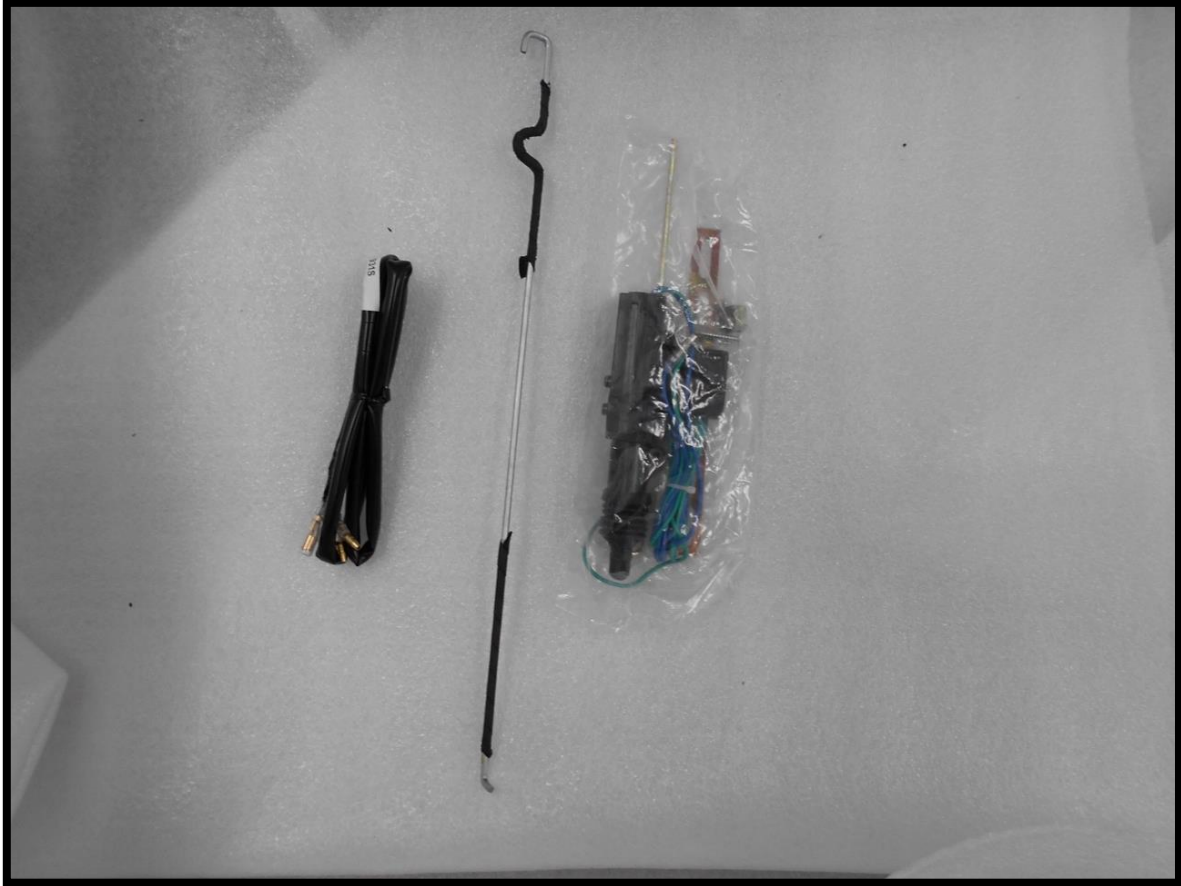


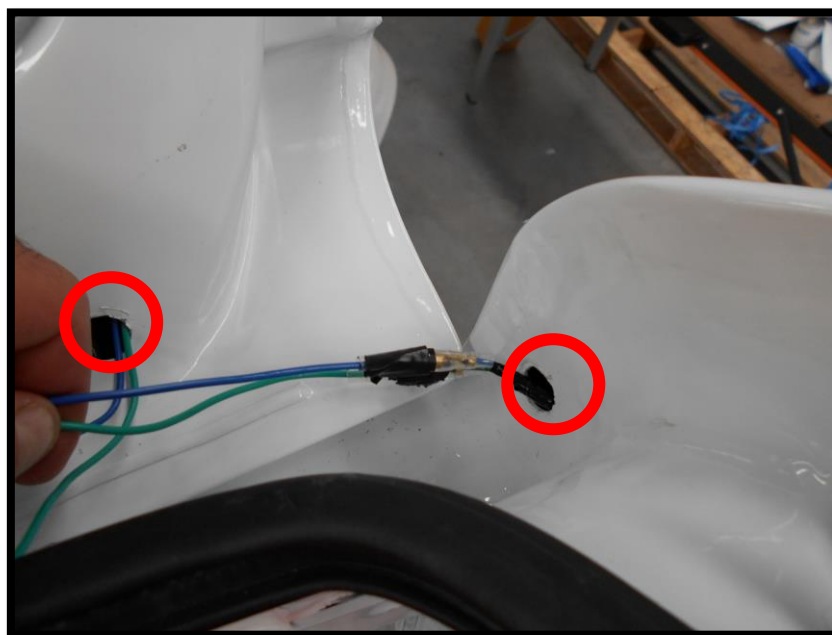
# Central Locking Installation (V2)

Central locking set contains:



## Installation:

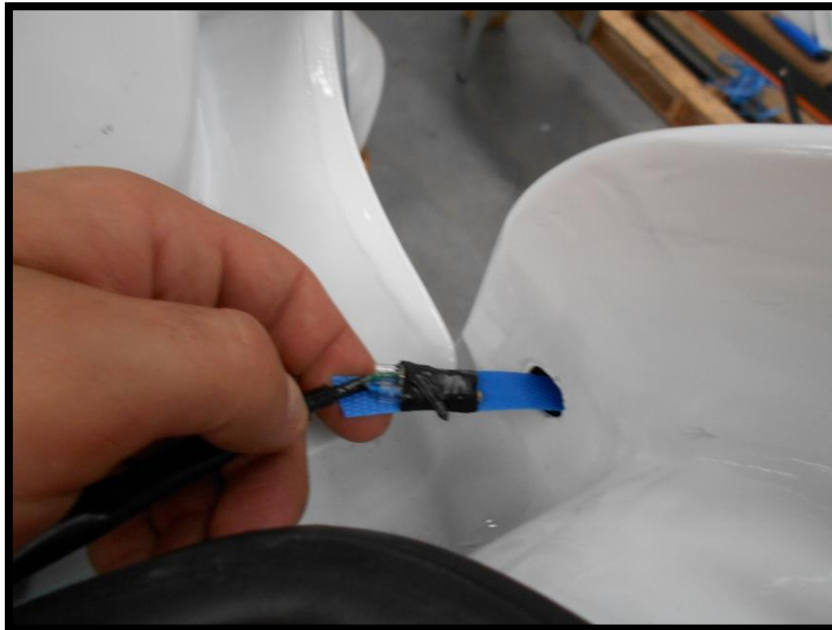
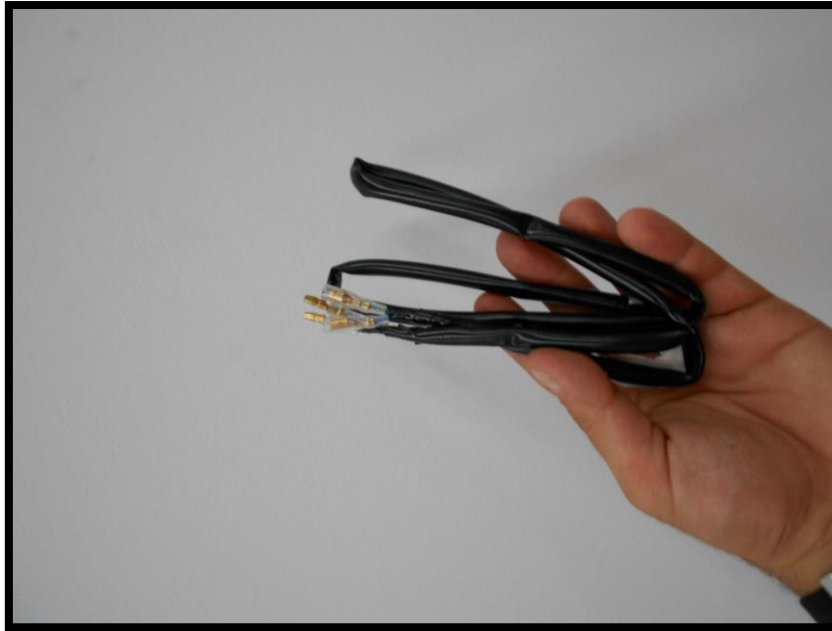
1. Drill two holes as showed in the picture. One of them in rear door, next one in the canopy.



2. Use the paint included in the box to secure drilled places.

## Central Locking Installation (V2)

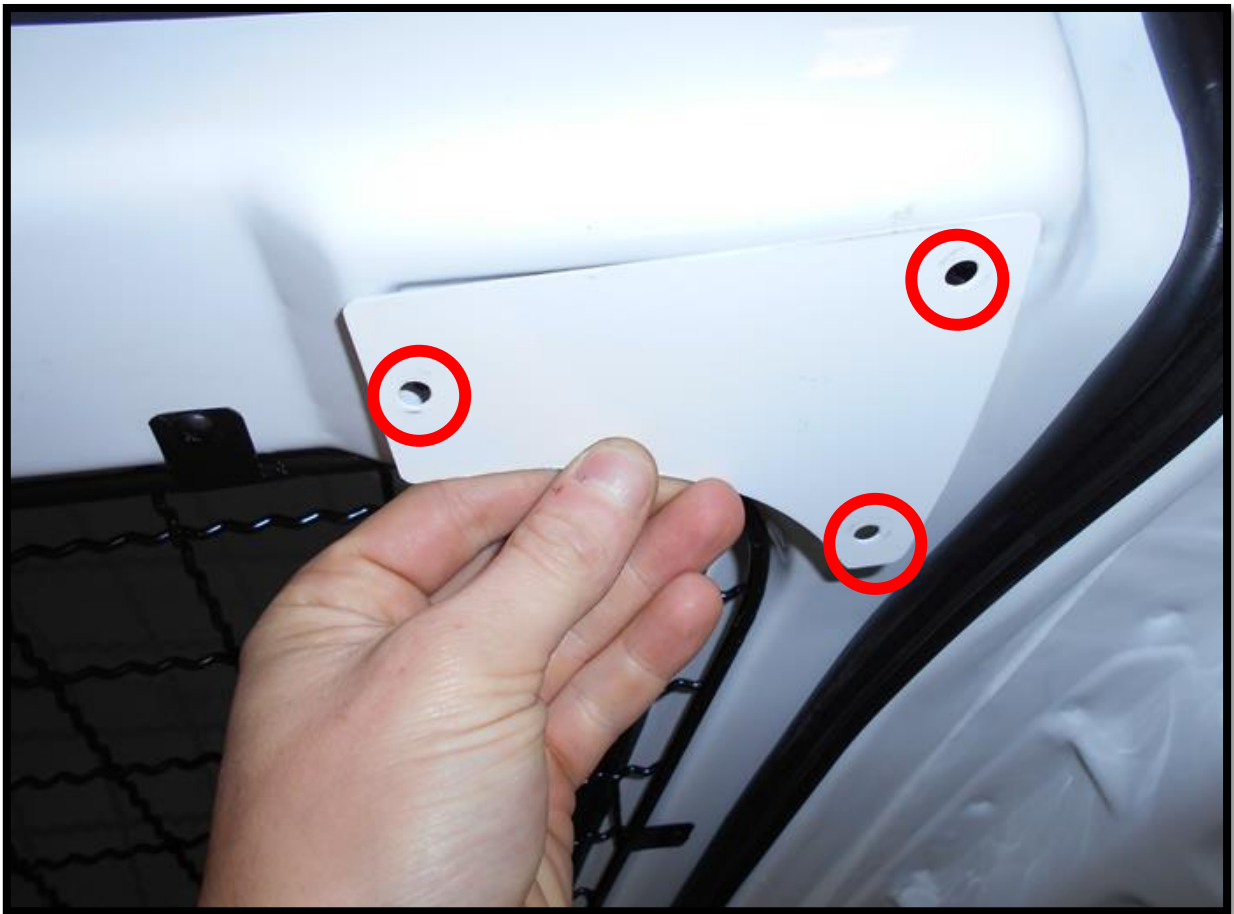
3. Use tape to pass the cable through the channel from top to bottom.



# Central Locking Installation (V2)



4. Remove the plate from rear door by unscrewing the three screws.



## Central Locking Installation (V2)

- Using the tape pass the cable through the channel from top to bottom of rear door.

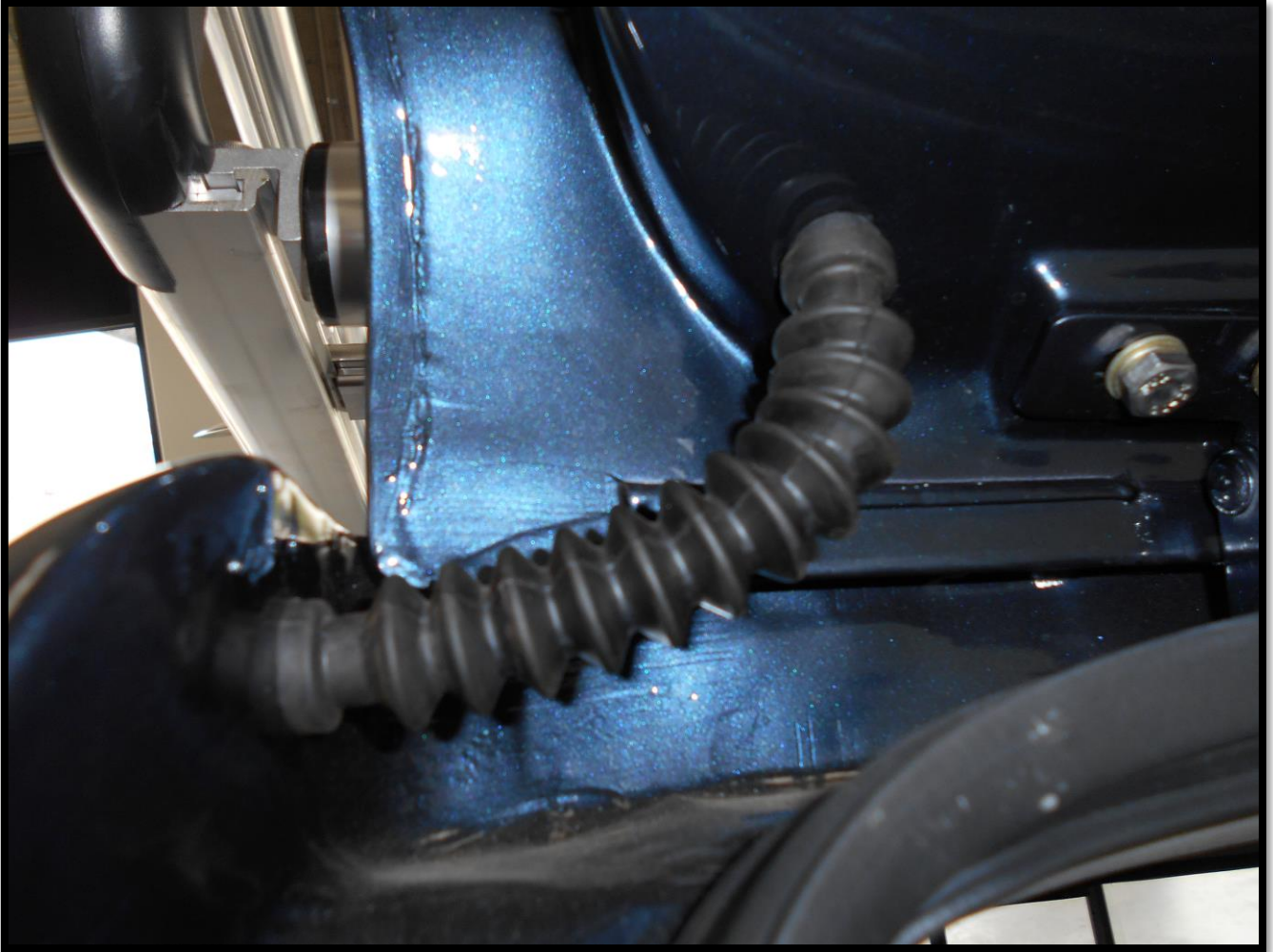


- Put a rubber casing on the cables and connect them.



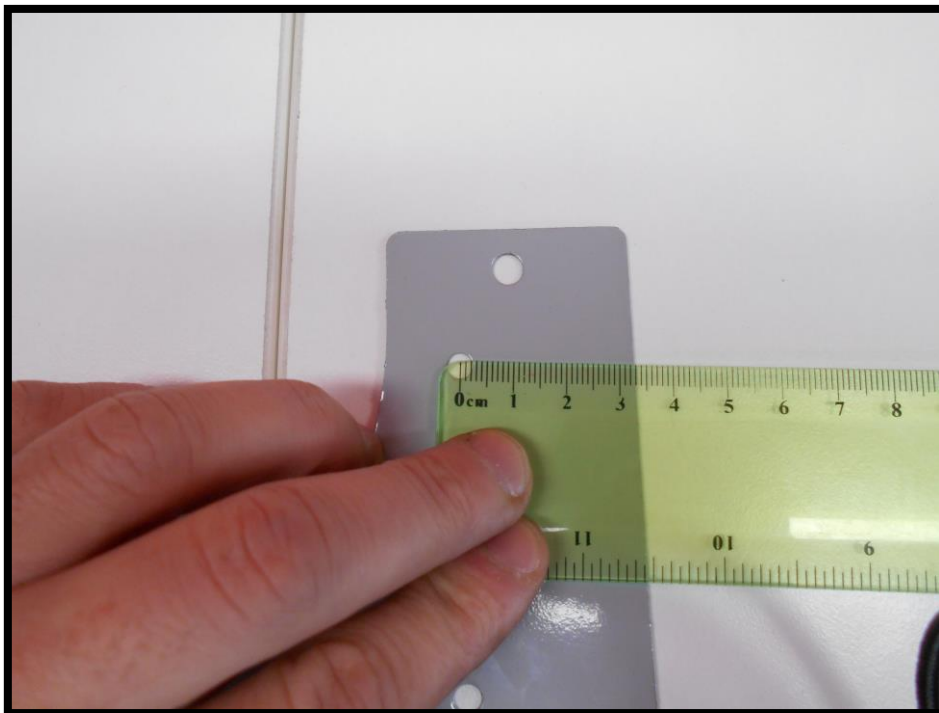
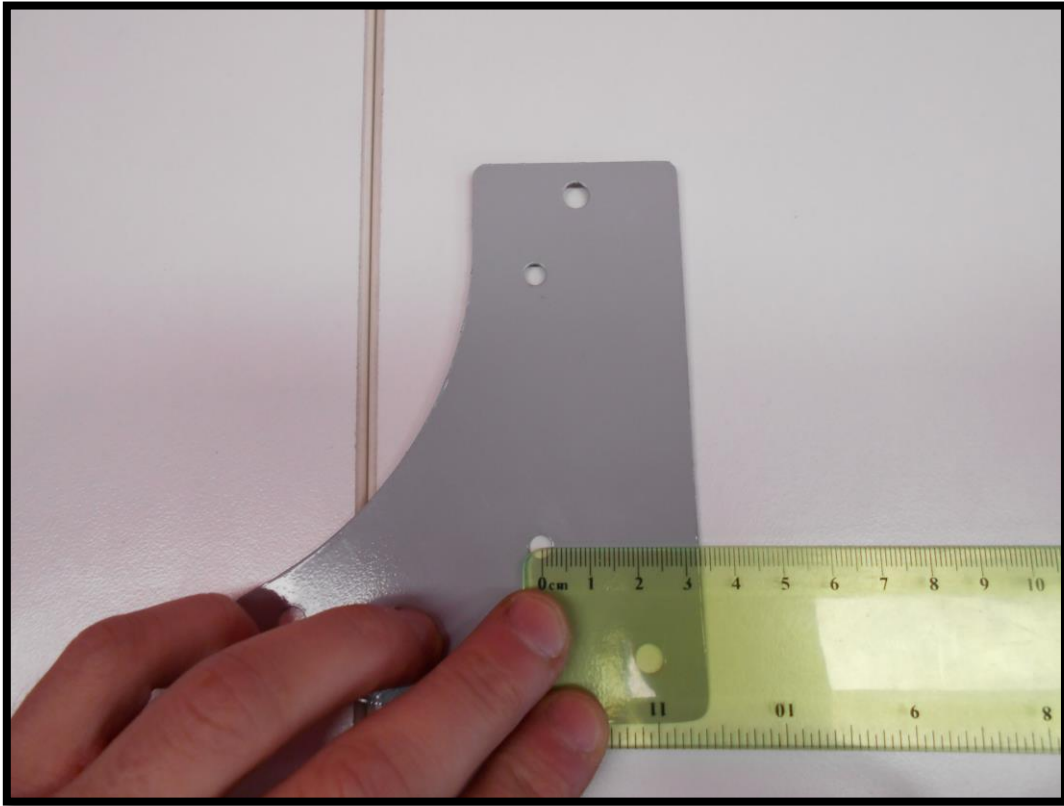
## Central Locking Installation (V2)

7. Connect the rubber to rear door of canopy.



## Central Locking Installation (V2)

8. Drill two holes in the canopy plate as showed on the pictures.



# Central Locking Installation (V2)

9. Connect rod with central locking mechanism and insert in the rear door.



# Central Locking Installation (V2)

10. Connect rod to the handle





# Central Locking Installation (V2)

11. Replace the lid on the central locking mechanisms and door handles.

